

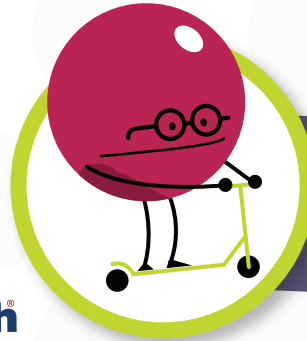
Which grape makes it all the way to **SCHOOL?**

Pick one and follow the path to see if you're right!

**HIMC**  
FARMS.

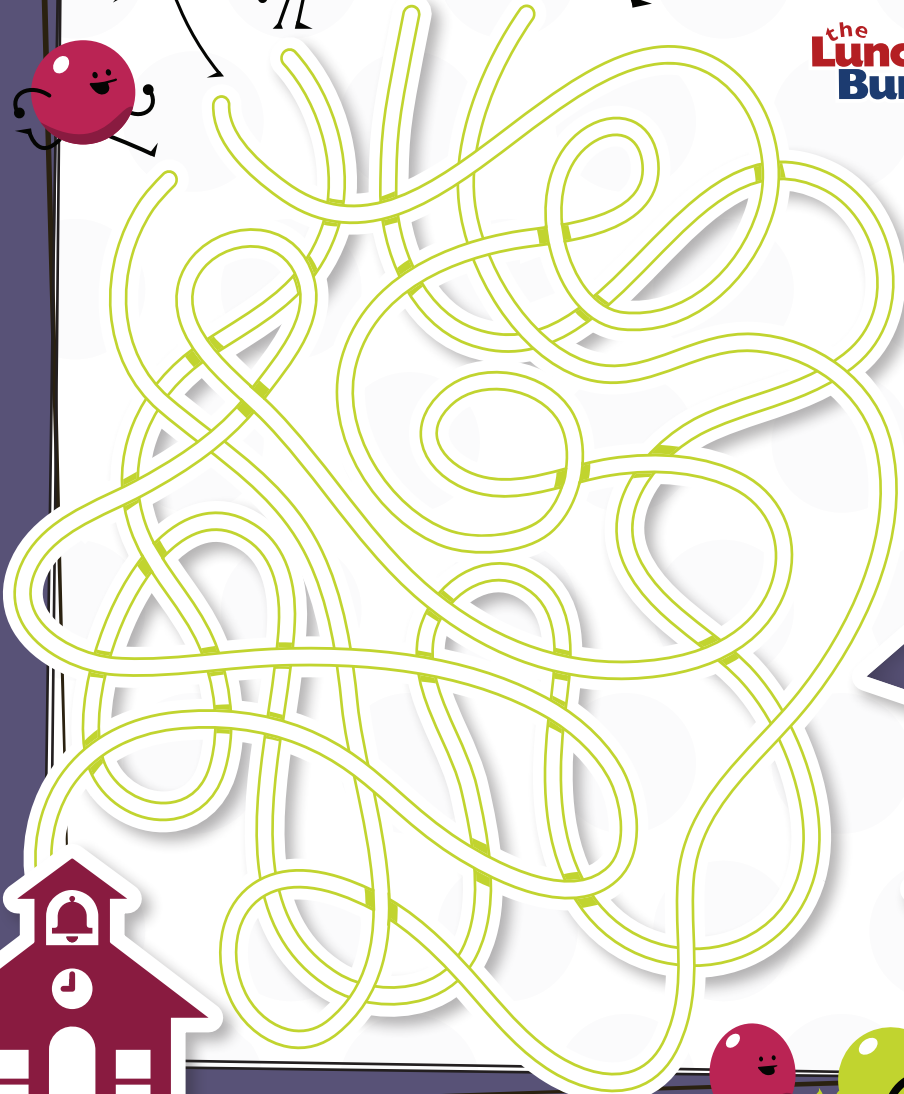
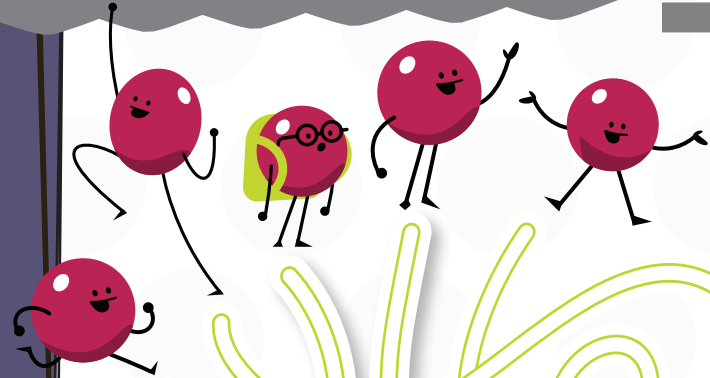
**GRAPE**  
*Escape*

the  
**Lunch**  
**Bunch**



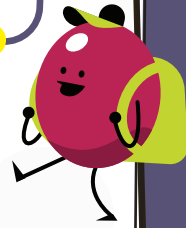
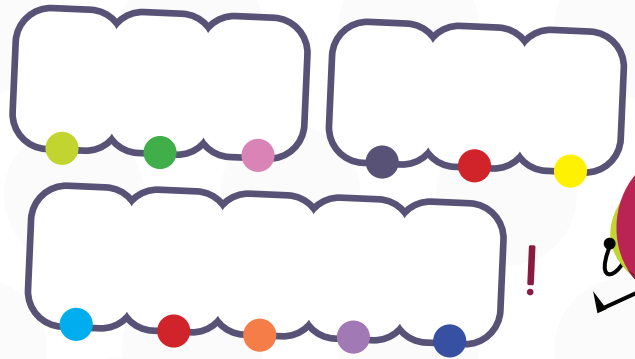
**TIC  
TAC  
TOE**

Why did the grape stop in the middle of the road?  
Use the clues to decode the answer!



He

of



When at first you don't succeed...

**TRY, "TRI"  
AGAIN!**

How many triangles can you count?

1-9 is good!  
10-15 is great!  
16-19 is awesome!

